

Technical Data of Ethernet LED Tower Light

7. Applying the Ethernet Device

1. Proceed to check the current network and the assigned IP address of your PC.
Start(run) -> CMD – ipconfig/all

```
Ethernet adapter Local Area Connection:  
  
    Connection-specific DNS Suffix  . :  
    IP Address. . . . . : 192.168.10.101  
    Subnet Mask . . . . . : 255.255.255.0  
    Default Gateway . . . . . : 192.168.10.1
```

2. Because the ETN tower light is connected to a hub with the PC that is same as the picture on the front page, ETN tower light and the PC are now connected with the same network.
3. Download the library file, test programs and manuals from the CD provided or from our website.
4. When you unzip the file, there will be a file with the same name below. The instructions are listed inside the file.

[Download]

[PDF Catalogue](#) [Operating Manual](#) [Test Program](#) [Manual & Library](#)

1.Dev. ETN Program Sample

Program Sample needed when developing (x32bit/x64bit compatibility)

2.How to use

Instructions of how to use the product and library file

5. When you unzip “ETN TEST PROGRAM.zip” file, following folders are created.

1.ETN Test Program

A program for setting IP before testing the ETN device

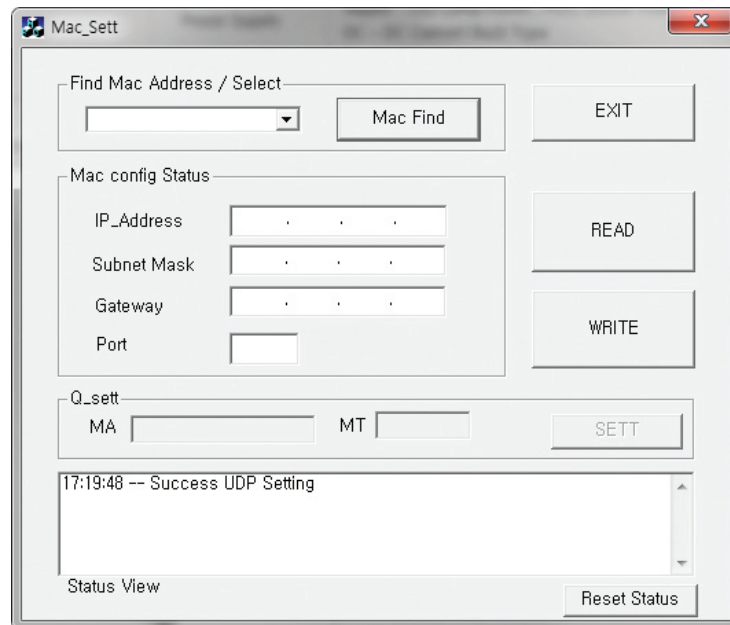
2.IP Set Program

A program for setting testing the ETN device

7. Applying the Ethernet Device

6. Run the "Mac_Setting.exe" program that is inside the IP Set Program Folder

- When the program is running such as the right figure, click the "Mac Find" button in the "Find Mac Address / Select" section
- MAC Address of the connected device appears when you click the Device List combo box .
(If the Mac Addr does not appear, make sure that the connection status or the power supply is functional and then retry.)
- Select the MAC Address of the device you want to change, and then click on the "eRad" button.
- Check the information and settings from the "Mac config status"s
- Set the value of users network information identified in the previous chapter (subnet mask, gateway) in each text box, and set a different IP_Addr than your PC Apply the settings by pressing the Write button
- The port is set to "20000" by default and the port number can be exchanged if necessary
- Reconnect After Disconnecting the power from the tower light.



7. ETN Test Program Files folder includes the followings

 QLight_Lamptest_TCP.exe

 QTvc_dll.dll

Technical Data of Ethernet LED Tower Light

8. Run the "QLight_Lampstest_TCP" program

Article	Detailed specification
Network Information Setting	- Input port on TCP/PORT and IP address on TCP/IP that set on Ethernet tower lights
Lamp Control	- ON : Click the button Lamp ON - ON/OFF : Click the button Lamp Flash - OFF : Click the button Lamp OFF
Model Select	- WS : 5 warning sounds(mono) - WP : 5 special warning sounds(mono) - WM(1) : 5 Melodies(mono) - WA(1) : 5 alarms(mono) - WB : Software Buzzer 5 sounds(speaker type) - Buzzer : 5 Buzzer sounds
Sound Select	- Select 5 sounds based on model which is fixed on "Model select"

User can select appropriate sound pattern by using 'Model select' menu. There're WS, WP, WM, WA and WB sound patterns and user can choose the option when placing order.

